



FUTUREPOWER

LYNX KF41: VERSATILE, MODULAR, FLEXIBLE.
EXPERIENCE THE FUTURE OF MECHANIZED WARFARE.

THE AGE OF THE LYNX. MORE POWER. MORE SPACE. MORE POSSIBILITIES.

Current and future military operations are set to become ever more complex – and increasingly unpredictable. This calls for an entirely new vehicle concept, one that takes full account of the shifting imperatives of the 21st century battlefield. Radically different. Uncompromisingly innovative. Never before has the principle of modularity been applied so systematically. This is evident not merely in the sheer number of ways the Lynx can be configured and customized for new land warfare capabilities, but also in the latest developments in Rheinmetall mission module design, which are nothing short of revolutionary. This opens up a slew of exciting new possibilities for deploying modular vehicle platforms.

The Lynx platform means maximum freedom of action. It makes sure that you stay mobile **MOVE**; it collects, evaluates and disseminates data **SENSE**, letting you respond flexibly to hostile action while creating windows of opportunity; and to exploit these with extreme effectiveness **STRIKE**. The age of the Lynx is at hand.



THE DAWN OF A NEW ERA. FROM THE DRAWING BOARD TO COMPELLING REALITY.



The Lynx KF41 is more than just a new, highly advanced vehicle: it is the ultimate future-proof platform, blending unsurpassed protection with massive firepower and unbeatable mobility in a uniquely modular concept. The result is a highly flexible system that doesn't just offer a solution for every scenario, but also delivers decisive advantages.


For example, the newly developed hull isn't just less expensive to produce, it also does an even better job of protecting the vehicle and its occupants. The counter-IED function is completely new in this class of vehicle, making it unique to Rheinmetall. Featuring the state-of-the-art, LANCE 2.0 turret armed with a new 35mm automatic cannon, the Lynx is a match for practically any threat. The driver, crew and passengers benefit from ergonomic optimization of the seats and the fighting compartment as well as new climate control and NBC equipment.



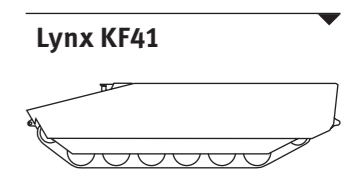


POWER OF VARIETY. ONE PLATFORM. MULTIPLE VARIANTS. INCLUDING YOUR OWN.

Mission success depends on the military's ability to adapt to rapidly evolving threats. The Lynx's modular design makes this possible. On the one hand it delivers extensive parts commonality even in highly specialized variants: on the other it allows the precise tailoring of technology to specific missions and threats. The training and logistics burden is also significantly reduced, leading to greater operational readiness. And when it comes to operating and supporting the vehicle, a Lynx is always a Lynx no matter how it is configured.

 IFV	 Field Ambulance	 Recovery Vehicle	 Repair Vehicle	 Client Specific
 Armament	 Vision	 Protection	 Active Protection	 Crew

Local suppliers for development, production and lifecycle support
Local procurement of ancillary systems



Equipment Package

Features

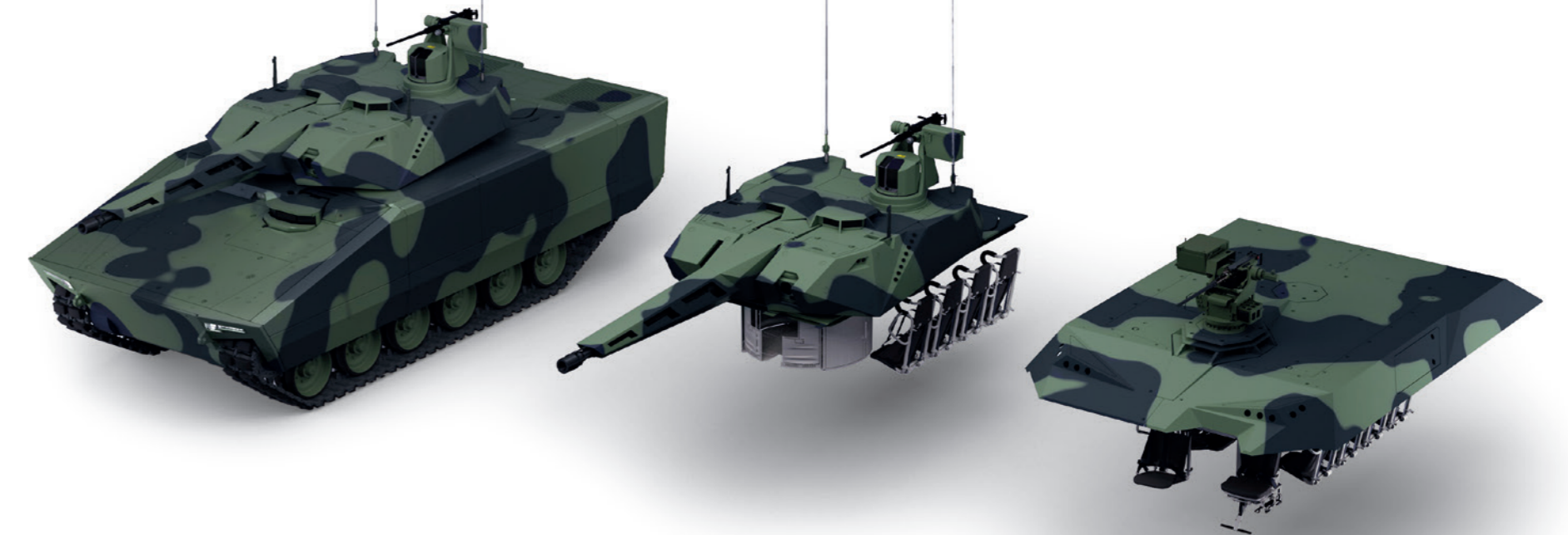
Local Content



Your customized Lynx



THINKING OUT OF THE BOX – AND IN THE BOX. REDEFINING MODULARITY.



The mission module is a Rheinmetall innovation that takes modular thinking to a whole new level. In the past, containers were used to store modules until whenever they were deployed. The modular option invariably resulted in unused resources and a waste of space and material.

The innovation: Rheinmetall mission modules can be directly deployed in standard ISO containers as a standalone solution, and thus play an active role in combat operations. And of course they can still be installed in the roof cut out of the Lynx as flexibly as ever – in the remarkably short time of just two to four hours. Modularity has never been so economical, intelligent or efficient.

REDEFINING THE MODERN BATTLEFIELD.

MULTI DOMAIN BATTLESPACE: FULL-SPECTRUM DOMINANCE.

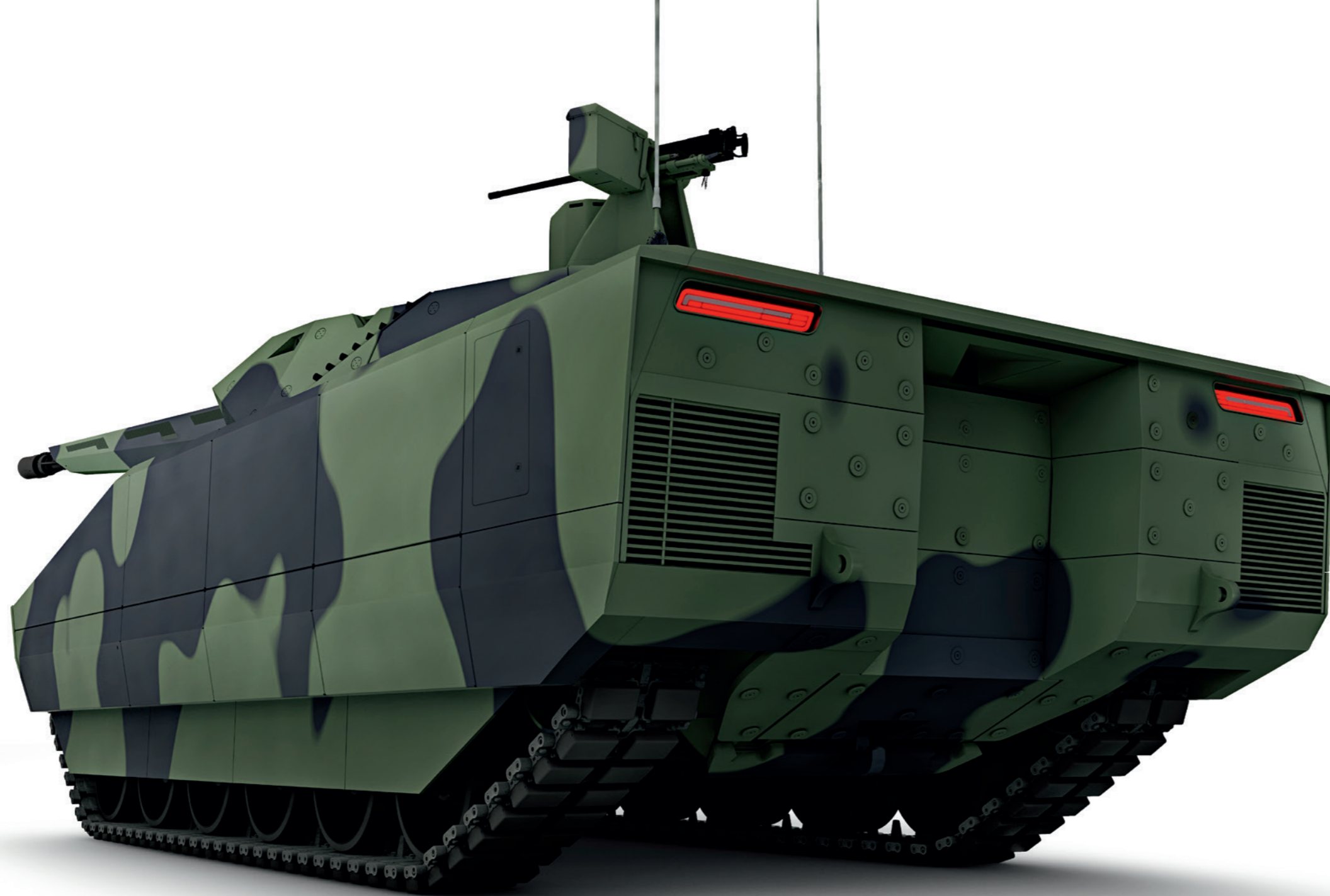


Lynx

The Multi Domain Battlespace scenario of the future varies significantly from past decades' scenarios. Proliferation of technology drives interconnectivity and access between domains, increasing battlespace complexity. The Lynx is designed to meet new levels of joint action and flexibility in seizing the initiative and presenting the opponent with equally unfavourable alternatives of responses.

Modular by design, the Lynx acts across domains to generate tempo and to seize fleeting opportunities by synchronising with other units and services. At the same time, the Lynx is capable of operating autonomously in a degraded environment where alignment with friendly forces is denied. Perfect: Rheinmetall, Europe's leading systems house for land forces solutions offers exactly the means and the tools to move, sense and strike jointly or independently in a changed defence environment.

MOVE. MISSION DYNAMICS IN ALL DIRECTIONS.



In modern warfare, speed, agility, adaptability and mobility are all of the essence. Units have to be able to perform their mission and subsequently regroup in extremely short order. Particularly important: not offering a stationary target for enemy reconnaissance, artillery fire or airstrikes. Autonomous units must be able to conduct reconnaissance and combat operations without endangering friendly forces. Given its unique capabilities, the new Lynx is ideally equipped for these scenarios.

1 Superb force protection

The newly developed hull features a protective framework that does an even better job of protecting the driver and crew.

Ballistic armour: Protects against antitank weapons, medium-calibre ammunition, artillery shrapnel, IEDs and bomblets, while a spall liner in the vehicle interior serves as final line of defence.

Mine and IED protection package: Here the Lynx delivers the highest level of protection in its weight class.

2 Extreme mobility

Packing an 1100-horsepower engine and capable of reaching a maximum speed of 70 km/h, the Lynx's ability to manoeuvre quickly and flexibly even in tough terrain is one of its great strengths. It is capable of quickly transporting troops and their equipment to potential flashpoints in remarkable comfort, even over long distances.

With an operating range of greater than 500 km, the Lynx is tailor-made for autonomous operations.

3 Premium crew comfort

Featuring a new driver's station, multifunctional seats and optimized ergonomics, the Lynx ensures that its crew of up to 11 reaches the area of operations safely and well rested. Entering and exiting the vehicle is easier now than ever thanks to the generously dimensioned rear hatch.



SENSE. SUPERIOR BATTLEFIELD AWARENESS.



In the multi domain battlespace, information has to be collected and disseminated as quickly as possible. Knowing the locations, movements and actions of opposing forces gives troops on the ground a crucial edge. Here, every reconnaissance unit operates as an autonomous entity, yet still forms an integral part of an information network that evaluates and fuses the transmitted data. Staying on top of the situation at all times thus becomes an -attainable goal, enabling troops to act and react instantly. The ideal choice here: the Lynx, with its panoply of equipment options.

1 Exact orientation of the weapon stations and superior field awareness

Stabilized Electro Optical Sight System/ SEOSS: a stabilized digital TV and IR optic with integrated laser rangefinder and fire control unit for commander and gunner.

2 Instantaneous detection of specific threats

Integration of laser warning sensors and Rheinmetall's Acoustic Shooter Localization System (ASLS).

3 Automatic target recognition and tracking

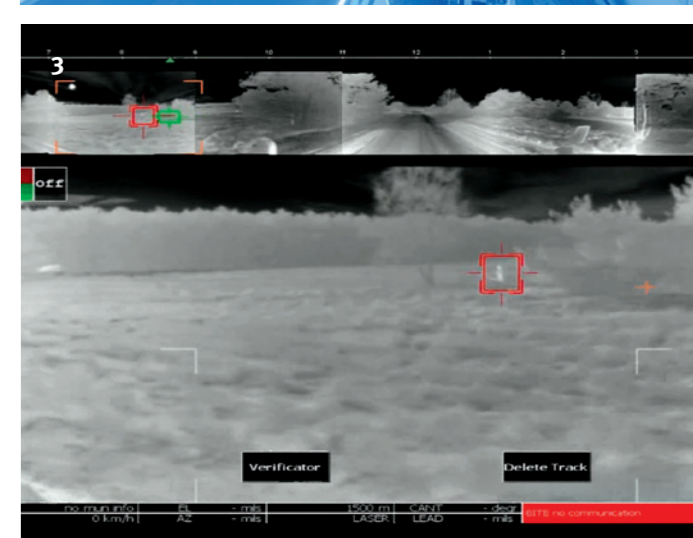
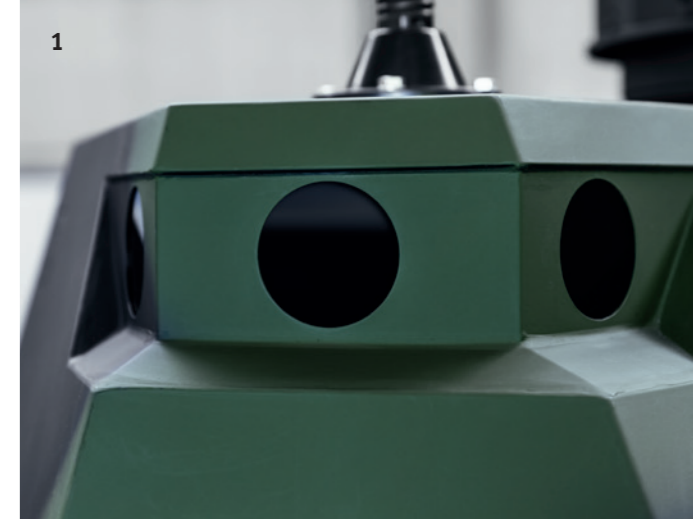
Enhances the hunter-killer and killer-killer capability, significantly reducing reaction times.

Optional reconnaissance drone

Having a ready-to-fly reconnaissance drone on board makes scanning the surrounding area safe and easy.

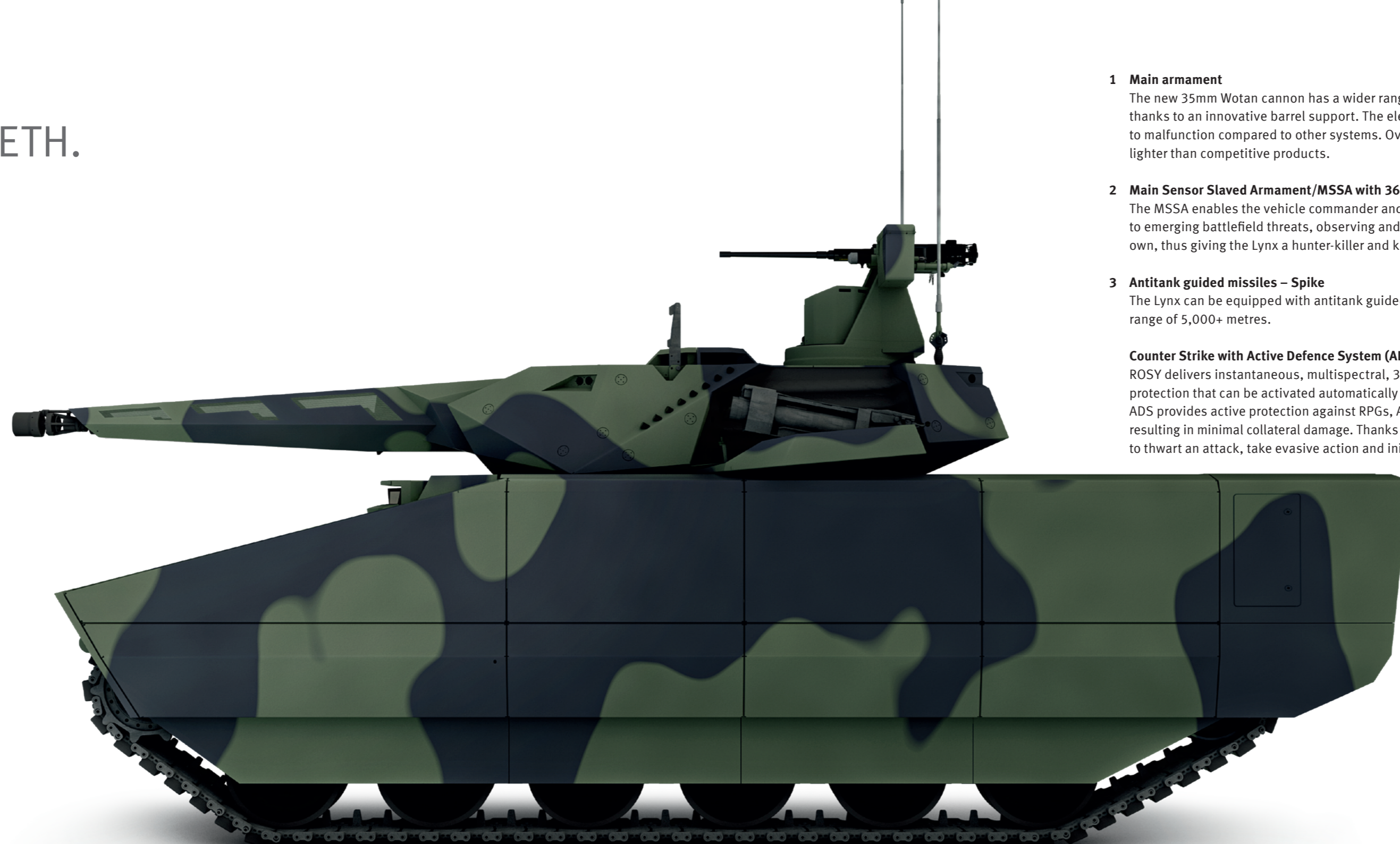
Real time situational awareness

BMS – real time communication with higher echelon elements, connection to vehicle sensors, real time information on the enemy, rapid transfer of information and operational status data.



STRIKE. ARMED TO THE TEETH.

Equipped for modern operational scenarios, the Lynx's world-class armament delivers enormous range, precision and penetrating power. Moreover, various modules for the platform provide added force protection and firepower during complex, multi-vehicle operations. Designed to operate as an adaptable, autonomous unit, the Lynx can literally serve as a force of one; but is also the perfect team player in battle group operations.



1 Main armament

The new 35mm Wotan cannon has a wider range and provides more precision thanks to an innovative barrel support. The electric drive makes it less prone to malfunction compared to other systems. Overall Wotan is more compact and lighter than competitive products.

2 Main Sensor Slaved Armament/MSSA with 360° view

The MSSA enables the vehicle commander and gunner to react flexibly to emerging battlefield threats, observing and engaging targets on their own, thus giving the Lynx a hunter-killer and killer-killer capability.

3 Antitank guided missiles – Spike

The Lynx can be equipped with antitank guided missiles featuring a maximum range of 5,000+ metres.

Counter Strike with Active Defence System (ADS) and ROSY

ROSY delivers instantaneous, multispectral, 360° visual smoke/obscurant protection that can be activated automatically when a vehicle comes under fire. ADS provides active protection against RPGs, ATGMs and KE tank ammunition, resulting in minimal collateral damage. Thanks to these two systems, it's possible to thwart an attack, take evasive action and initiate countermeasures.

1



2



3



PARTNERSHIP POTENTIAL. LOCAL CONTENT PREFERRED.

 RHEINMETALL
DEFENCE

Strong partnerships with local companies form a major part of Rheinmetall's approach to resolving the challenges of developing and producing military equipment. Having Rheinmetall as a partner gives local companies access to new international markets and provides the capital they need to finance fresh growth.

RHEINMETALL LANDSYSTEME GMBH

Heinrich-Ehrhardt-Strasse 2

29345 Unterluesse GERMANY

www.rheinmetall-defence.com

B260e05.18 © Rheinmetall