

# CORROSIONPROTECTOR

## KS P147 – IF CORROSION IS AN ISSUE

### FEATURES AND CHARACTERISTICS

- Excellent corrosion protection
- For maintenance-free and dry applications
- Optimal use in contaminated water areas
- Minimal swelling tendency

### OPERATING CONDITIONS

Dry	●	●	○
Oil-lubricated	●	●	○
Greased	●	●	○
Water-lubricated	●	○	○

### TYPICAL APPLICATIONS

#### Wiper blades



#### EGR valves



#### Hinges



### Additional applications

- Solenoid valves
- Weir gate construction
- Pin bearing for water dams
- and many more

For further applications please contact our technical support

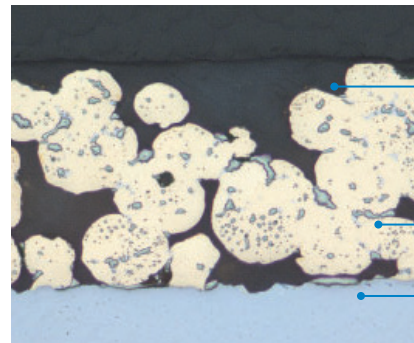
## BEARING STRUCTURE

Sliding elements

- Steel back (DC04)
- Porous sintered bronze layer
- Solid lubricant PTFE with BaSO<sub>4</sub>

Characteristics

- Solid lubricant provides a run-in layer
- Total layer thickness < 0.4 mm



PTFE  
+ BaSO<sub>4</sub>

Bronze layer

Steel back

## MATERIAL CHARACTERISTICS

Characteristic values		Value	Unit
Permissible specific bearing load p	Static	250	[N/mm <sup>2</sup> ]
	Very low sliding speed	140	[N/mm <sup>2</sup> ]
	Oscillating, vibrating	56	[N/mm <sup>2</sup> ]
Permissible sliding speed	Dry running	2	[m/s]
	Wet running	3	[m/s]
Permissible temperature range		-200 to +280	[°C]
Thermal expansion coefficient		11*10 <sup>-6</sup>	[1/K]
Thermal conductivity		> 42	[W/(m · K)]

## QUALITY

- The complete manufacturing process is monitored and controlled by a proven set of quality assurance measures

## CERTIFICATES

- Made in Germany
- ISO9001, ISO14001, ISO50001, IATF 16949

## SUSTAINABILITY



## CONTACT

bearing@de.rheinmetall.com  
Phone: +49 6227-5 60

KS Gleitlager GmbH does not assume any liability for the completeness of the data presented in this material brochure. It is exclusively up to the customer to form his opinion about the characteristics of the material and its adequacy for the purposes intended by the customer. KS Gleitlager GmbH would also like to stress that any information given in this materials brochure does not constitute a legal guarantee for the appearance, characteristics and workmanship nor does it represent a warranted quality.