



PERFORMANCE **DRIVER**

KS P240/KS P243

RESILIENT | DYNAMIC | RELIABLE

FEATURES AND CHARACTERISTICS

- Very high load capacity
- Good resistance to wear
- Very good adaptability
- Usage in hydrodynamic applications

OPERATING CONDITIONS

Dry	○	○	○
Oil-lubricated	●	●	●
Greased	●	●	●

TYPICAL APPLICATIONS

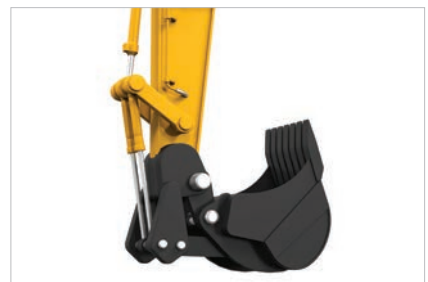
Breaks / Chassis



Mechanical engineering



Construction machines



Additional Applications

- Kingpins
- Pumps
- Suspension
- Industrial trucks
- and many more

For further applications please contact our technical support.

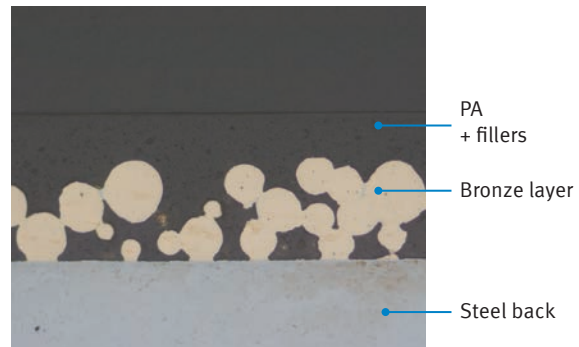
BEARING STRUCTURE

Sliding elements

- Steel back (DC04)
- Porous sintered bronze layer
- PA sliding layer with fillings

Characteristics

- Suitable for tribological systems with initial lubrication or hydrodynamic systems with increased proportion of mixed friction



MATERIAL CHARACTERISTICS

Characteristic values		Value	Unit
Permissible specific bearing load p	Static	250	[N/mm ²]
	Very low sliding speed	200	[N/mm ²]
	Oscillating	150	[N/mm ²]
Permissible sliding speed v	Oil-lubricated	7	[m/s]
	Greased	3	[m/s]
Permissible temperature range		-60 to +150 (short-term: +200)	[°C]
Thermal conductivity		> 3	[W/(m · K)]

QUALITY

- The complete manufacturing process is monitored and controlled by a proven set of quality assurance measures

CERTIFICATES

- Made in Germany
- ISO9001, ISO14001, ISO50001, IATF 16949

SUSTAINABILITY



CONTACT

bearing@de.rheinmetall.com
Phone: +49 6227-5 60

KS Gleitlager GmbH does not assume any liability for the completeness of the data presented in this material brochure. It is exclusively up to the customer to form his opinion about the characteristics of the material and its adequacy for the purposes intended by the customer. KS Gleitlager GmbH would also like to stress that any information given in this materials brochure does not constitute a legal guarantee for the appearance, characteristics and workmanship nor does it represent a warranted quality.