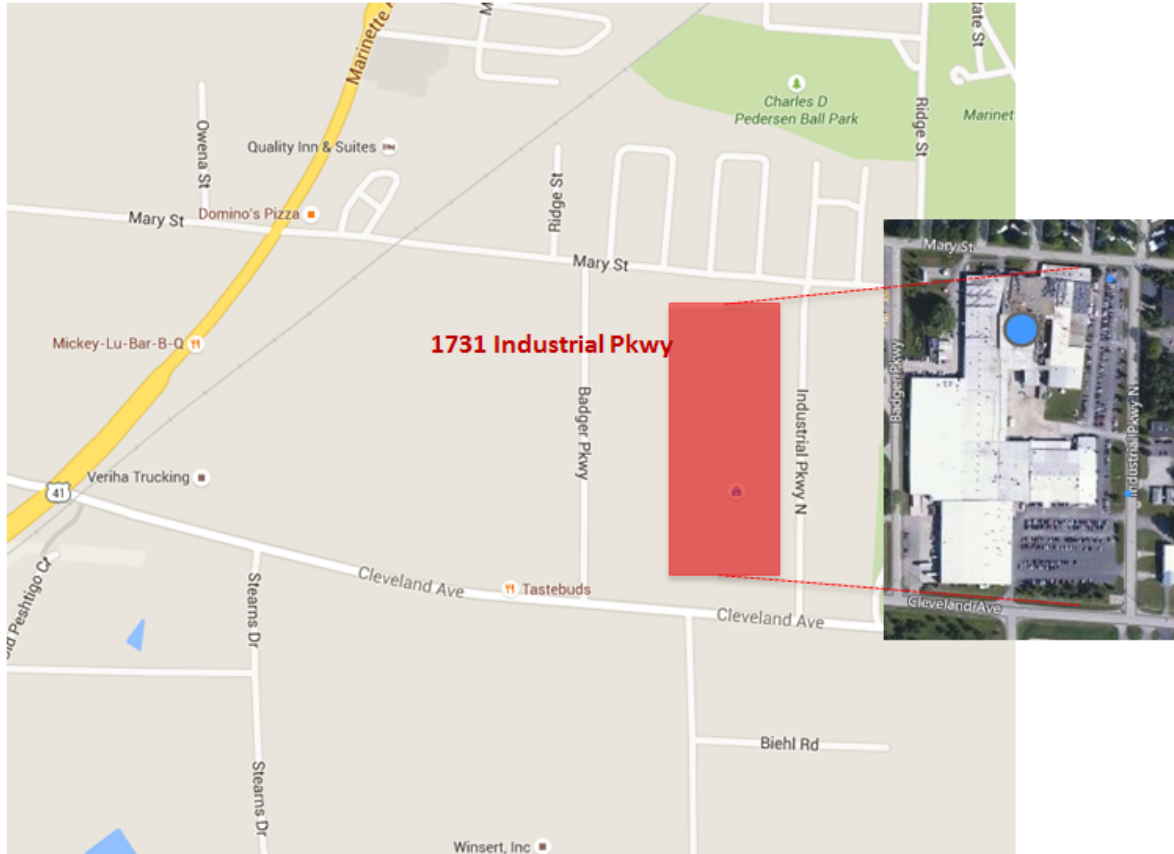


Delivery Address and Route Planning to KS Small Bore Pistons, LLC



<https://www.google.com/maps/place/1731+Industrial+Pkwy+N,+Marinette,+WI+54143/@45.0862769,-87.6416837,17z/data=!3m1!4b1!4m2!3m1!1s0x4d52aefd9dfd6767:0x31cc80eae5490005>

KS Kolbenschmidt US, Inc.
1731 Industrial Parkway
(use *Badger Parkway Entrance*)
Marinette, WI 54143
Main Office: +01 715-735-0181

Goods receiving time:
Monday to Friday: 5.00 a.m. to 4.00 p.m.

Office Time:
Monday to Friday: 7:00 a.m. to 4:00 p.m.

Any deliveries made outside of the opening times must be approved by the supply planner and the goods receiving department, prior to occurring. Deliveries on public holidays must also be approved.

Contact:

Department	Name	Phone
Distribution Center Manager	Steve Kehoe	+01 715-735-1215
Lead Receiver	Brad Constine	+01 715-735-1146