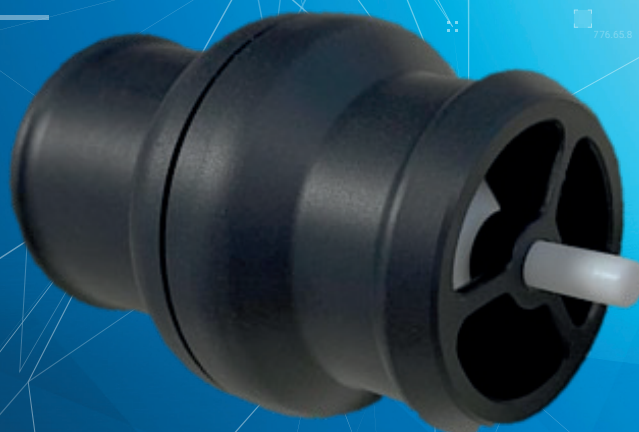


AIR SHUT OFF VALVE



AIR SHUT OFF VALVE

Introducing the cutting-edge Air Shut Off Valve: Engineered to deliver precision pressure control with a swift closure mechanism. Experience a notable reduction in system shut-down time, enhancing operational efficiency.

Our valve is designed for durability, significantly extending the lifetime of the stack. With its compact design, it requires minimal installation space and boasts an impressively low weight, ensuring a seamless integration into your system.

BENEFITS

- PEM Fuel Cell (PEMFC)
 - Increased lifetime of the stack
- Position
 - Cathode path
 - Behind compressor
- Decreased system shutdown time

TECHNICAL DATA

Max. flow rate	~ 60 kg/h @ 800 slm
Cracking pressure	4–7 mbar
Pressure drop	21 mbar @ 60 kg/h
Temperature range	-40 °C ... +70 °C

RHEINMETALL POWER SYSTEMS DIVISION

Within Rheinmetall the Power Systems Division is a system provider for high-quality and innovative (mobility) solutions, control technologies and digital applications for the automotive and energy industries, among others.

With its Business Units and Business Areas, the Division stands for outstanding expertise in the following areas: air management, thermal management, e-mobility and digitalization, hydrogen technology, metallic plain bearings, composite materials and lightweight construction. The Power Systems Division also represents Rheinmetall's global after-market activities through the Trade Business Unit.

CONTACT

Power Systems Division

Pierburg GmbH · Alfred-Pierburg-Str. 1 · 41460 Neuss
power-systems@rheinmetall.com