

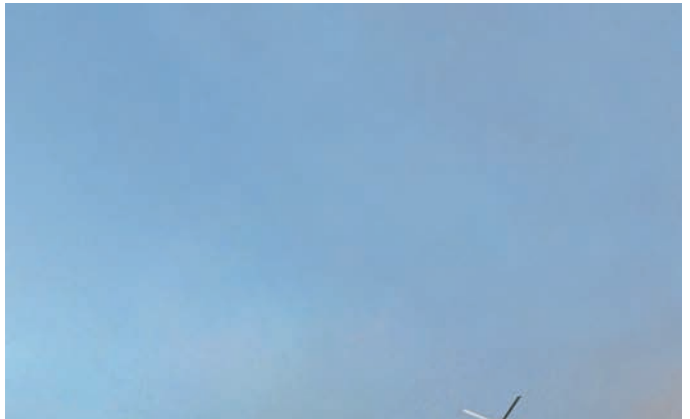


# THE **HERO**

## LOITERING MUNITIONS

MULTI-DOMAIN WEAPON SYSTEM FOR LAND, SEA & AIR





### **MULTI-DOMAIN, NLOS SYSTEMS FOR LAND, SEA AND AIR**

The HERO series of high precision loitering munition systems is designed to provide operating forces in the modern battlefield with the ultimate operational flexibility. They bring to the fighting forces unique independent fire capabilities combined with quality ISR, allowing them to locate, track and engage time sensitive low signature enemy targets at extended ranges organically and independently.

The HERO Loitering Munition loiters above the target area, locate and track the enemy, ‘investigate’ possible targets to help selecting the high value ones, choose the right timing, direction and angle of attack, and then performs a precise strike. HERO Loitering Munitions offer unique commonality, which allows all systems to be operated by the same ground operator unit and datalink terminal. All HERO Systems are designed to operate in challenging battlefield conditions, including GPS denied environment and communication interferences.

### **CHANGING THE BATTLEFIELD – COMBAT PROVEN**

With units deployed and field proven record in leading fighting forces – including dominant NATO countries, the HERO series of Loitering Munitions is already widely accepted and procured by world military forces. Based on recent lesson learning from use of loitering munitions in some of the world current active battlefields, the HERO series introduces unprecedented advantages to the forces operational traits and is already becoming a ‘Battlefield Game Changer’.

### **SUITABLE FOR A WIDE SPECTRUM OF MISSIONS**

The HERO series of Loitering Munitions is suitable for a wide range of units and forces, and for tactical and strategic missions, of short, medium and long ranges. The unique design of the HERO enables maximum maneuverability against high speed moving targets with pinpoint strike accuracy and mission abort and reengage capability. Depending on the model, the systems are man portable and can be mounted on land vehicles, ships or aerial platforms.

### **LOW COLLATERAL DAMAGE – COMPLYING WITH STRICT RULES OF ENGAGEMENT**

The HERO Loitering Munitions are designed to guarantee mission success with the lowest collateral damage. They are ideal for use in Close Combat situations and confined urban fighting scenarios. Maintaining the ‘Man-in-the-Loop’ at all times allows for ‘calculated’ and pin-point strikes precisely tailored to the exact timing and constraints of the ever-changing situation, and the constant recording of the mission on the ground terminal will provide the evidence of the compliance with strict rules of engagement.



# ON LAND

## SIMPLE DEPLOYMENT AND FLEXIBLE OPERATION

Extremely lightweight, and man-pack portable, the HERO Loitering Munitions can be carried right into the heart of the battle and deployed within minutes. With a pneumatic launch, low noise and low thermal, visual and radar signature, HERO is a silent, invisible, surprise attacker – a major asset both in rural and urban battlefields while allowing the operating soldier to remain undetected from enemy.

Based on extensive field experience and tested in combat, the HERO highly advanced munitions are **simple to operate**, specifically tailored for use of land forces in harsh conditions. With their unique ability to **transfer the control** between different units and forces in the battlefield while in mid-air, the HERO series allows the modern soldier to utilize the advantages of the entire line of munition at his will. HERO series provide **full commonality**, offering even frontline dismounted units, and small light forces, highly accurate long-range heavy firepower combined with advanced ISR that until now was only achieved by complex cooperation between several units and echelons. They bring a completely new range of operational possibilities to the land forces battleground.

## VARIETY OF MISSIONS & TARGETS FOR ALL ECHELONS

The HERO system has consistently demonstrated effectiveness against variety of targets, such as infantry targets, moving light-duty vehicles, tanks, fortified enemy positions, air defence systems and key high-value installations – delivering a significant advantage in today's conflicts.

With rapid deployment, independent target acquisition and attack capabilities, the unique HERO loitering systems can be

utilized by all military echelons – from the individual soldier to central command – for both strategic and tactical missions.

**In urban fighting and populated area** the Hero-30 and 120 provide unprecedented tactical advantages, allowing the forces independent ability to locate, identify and track small, time sensitive 'illusive' targets and conduct a pinpoint 'calculated' strike. If necessary, the HERO systems can minimize collateral damage, by allowing the forces to validate the need to attack, and by their unique ability to conduct a mid-air full abort of the strike, re-enter loitering mode, and then resume the attack, or be re-assigned to other targets.

**On rural and 'open' battlefield, the Hero 120 and 400EC** can carry out accurate, and surprising attacks against midrange hard targets, tanks, vehicles, concrete fortifications, air defence systems and other high-value enemy objects. Due to the unique NLOS control and guidance, the operating soldiers can conduct the attack from secure positions, allowing them much improved survivability.

**Special Forces** can independently operate the backpacked portable Hero-30 and 120, as well as utilize and control Hero-400EC and Hero-900, launched as rear-support, to achieve their unique missions.

**Strategic objectives**, high-value targets and installations can be accurately engaged by the heavier long-range Hero-400EC, Hero-900 and Hero-1250, which deliver powerful warhead and significant destructive abilities.







# AT SEA

## MULTI-DIMENSIONAL COVERAGE OF THE NAVAL ARENA

The HERO series of Loitering Munitions provides new and unique operational solutions to the different dimensions of the naval warfare. Their extended range and unique transfer of control trait, offer versatile use, improved cooperation and synergy between vessels and other units along with quick response to fast evolving threats.

Launched from single or multi-canister launchers, and easily integrated to existing naval C2 and target-acquisition systems, HERO systems bring highly affordable solutions to the growing challenges of the complex naval arena.

**Sea to Sea** – the Hero-30, 120 and Hero-400EC systems provide new and highly affordable alternatives to the on-deck medium range anti-ship missile systems currently in use. They allow improved independent target acquisition and firepower, and enhanced cooperation between operating vessels. While countering small, fast moving threats, they also bring additional operational value by allowing the firing ship to ‘investigate’ suspicious targets, validate the need to attack, and carefully choose the aim-point to allow ‘calculated’ effect.



**Sea to Shore** – the Hero-30, 120 and 400EC loitering munitions allow operating vessels to locate, track and attack hidden targets, even when such targets are not in direct line-of-sight or behind obstacles (like coastline buildings). This can be done from safe distance that will protect the firing vessel from many of the coastline threats, significantly increasing most Offshore Patrol Vessel’s (OPVs) operational range.

**For Marines** – the HERO systems unique ability to transfer the control over the munition while it is in mid-air, allow unprecedented combination of highly accurate long-range heavy firepower with advanced ISR. Supporting launch of Hero-30, 120 or 400EC loitering munition can be done from a supporting vessel, and the control can be transferred to the on-shore marines, allowing them to locate and engage the enemy. The Marines ability to carry man pack portable HERO systems allows for enhanced long-range pinpoint strike capabilities for a variety of operational objectives. The Hero-30 and 120, can be carried and launched from a landing craft during beach landing, or be used for accurate surprise attacks against land targets while on land.



**For Coastal Defence** – the Hero 400EC loitering munitions provide a unique advanced medium-range solution, which is both and highly affordable compared with current systems in use. Their unique ISR and loitering capabilities provide additional high value when the suspected threat needs to be visually located and checked, to avoid mistakes with civilian ‘innocent’ vessels.

# IN THE AIR

## ENHANCED AND HIGHER SURVIVABILITY

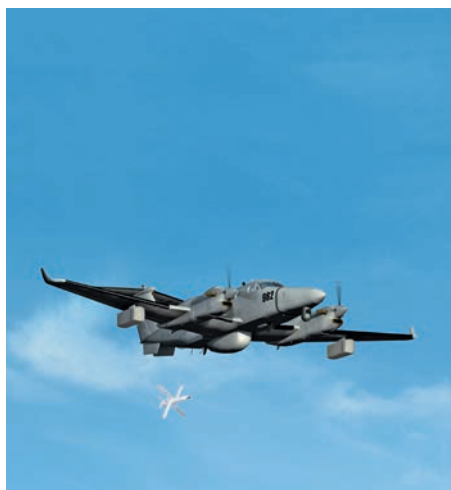
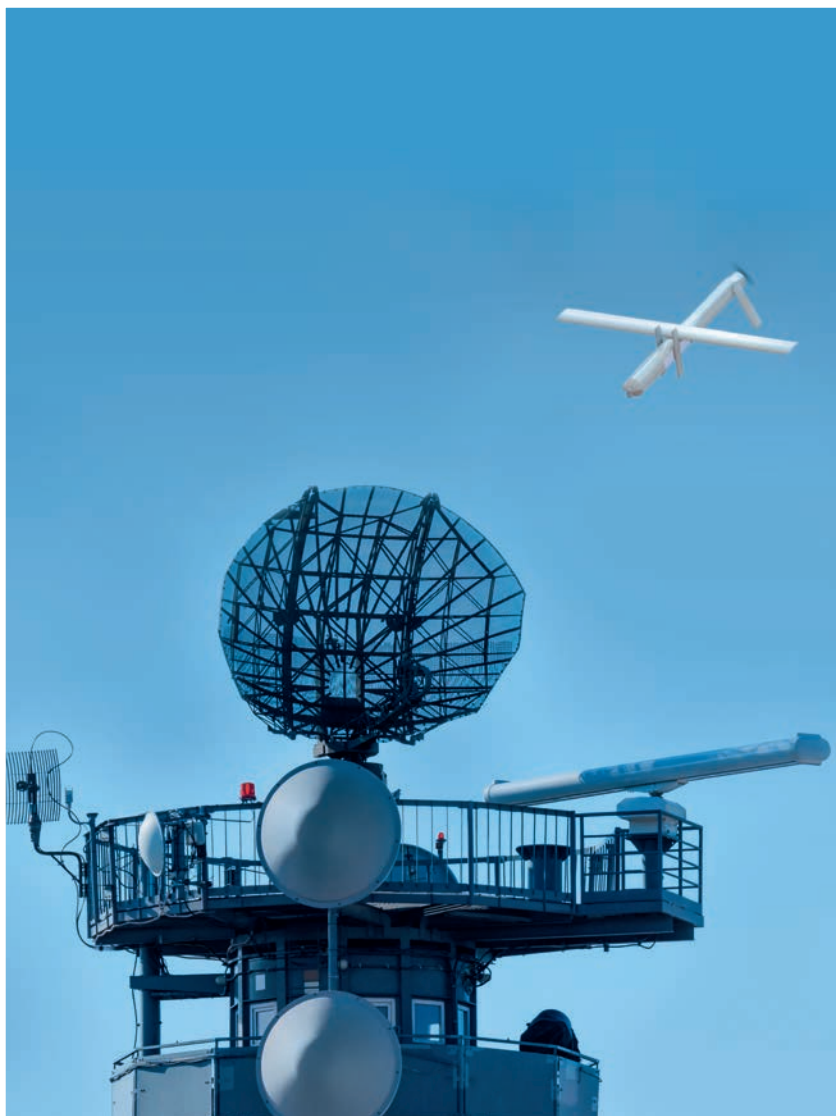
The HERO Loitering Munitions can be launched from a wide choice of aerial platforms.

The systems are seamlessly integrated into the air vehicle avionics suite – hence allowing the aircrew to simply operate the munition using the standard controls. The flight and guidance of the HERO munitions is done from the platform, and can be transferred to fighting forces on the ground. This dramatically enhances the operational range of the air platform, and its ability to counter low-signature time sensitive targets, allowing it much greater ability to support the ground (or naval) forces.

The loitering munitions ability to operate at lower altitudes, many times lower than the clouds, increases the operational flexibility of the air platform, especially in near terrain flying altitude airspace. While operating the HERO systems, the aerial platform can stay in a standoff position, significantly lowering its exposure to possible threats, and allowing it to penetrate and neutralize many advanced air defence systems. All HERO Systems are designed to operate in challenging battlefield conditions, including GPS denied environment and communication interferences. This makes them highly suitable for the modern battlefield.







# THE HERO SERIES OF LOITERING MUNITIONS



**HERO-30**

- Weight (with canister): 7.8 kg
- Warhead: 0.5 kg
- Range: 15+ km
- Endurance: 30 min
- Motor: Electric
- Launch method: Single/Multi-Canister



**HERO-120**

- Weight (with canister): 18 kg
- Warhead: 4.5 kg
- Range: 60+ km
- Endurance: 60 min
- Motor: Electric
- Launch method: Single/Multi-Canister



**HERO-400EC**

- Weight: 50 kg
- Warhead: 10 kg
- Range: 120+ km
- Endurance: 2 hr
- Motor: Electric
- Launch method: Rail, Single/Multi-Canister



**HERO-900**

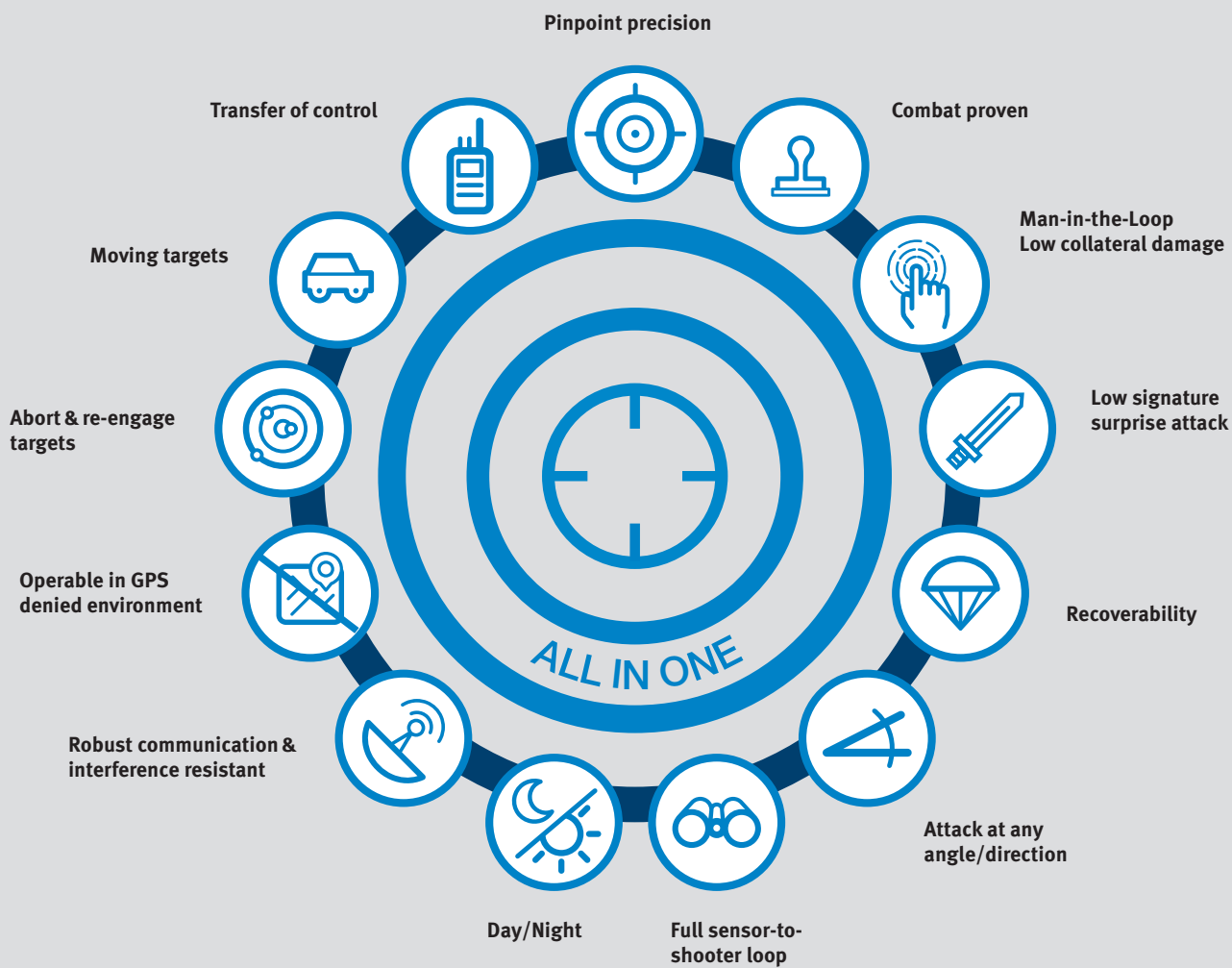
- Weight: 110 kg
- Warhead: 30 kg
- Range: 150+ km
- Endurance: 6 hr
- Motor: Gasoline
- Launch method: Rail, Single/Multi-Canister



**HERO-1250**

- Weight: 155 kg
- Warhead: 50 kg
- Range: 200+ km
- Endurance: 10 hr
- Motor: Gasoline
- Launch method: Rail, Single/Multi-Canister

Sales of HERO products are subject to export control limitations and approvals.



**RWM Italia S.p.A.**

[info.rwmitalia@rheinmetall.it](mailto:info.rwmitalia@rheinmetall.it)

[www.rheinmetall.com](http://www.rheinmetall.com)

**UVision Air Ltd.**

[info@uvisionuav.com](mailto:info@uvisionuav.com)

[www.uvisionuav.com](http://www.uvisionuav.com)